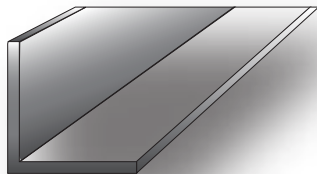




Angulos de Fierro

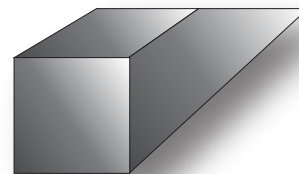


Medida		Peso	
Pulgadas	Milímetros	Kg/m	Kg/6m
1/8 x 3/4	3.2 x 19.1	0.880	5.28
1/8 x 1"	3.2 x 25.4	1.190	7.14
1/8 x 1 1/4	3.2 x 31.7	1.500	9.00
1/8 x 1 1/2	3.2 x 38.1	1.830	10.98
1/8 x 2"	3.2 x 50.8	2.460	14.76
3/16 x 1 "	4.8 x 25.4	1.730	10.38
3/16 x 1 1/4	4.8 x 31.7	2.200	13.20
3/16 x 1 1/2	4.8 x 38.1	2.680	16.08
3/16 x 2"	4.8 x 50.8	3.630	21.78
3/16 x 2 1/2	4.8 x 63.5	4.600	27.60
3/16 x 3"	4.8 x 76.2	5.970	35.82
1/4 x 1 "	6.3 x 25.4	2.220	13.32
1/4 x 1 1/4	6.3 x 31.7	2.860	17.16
1/4 x 1 1/2	6.3 x 38.1	3.490	20.94
1/4 x 2"	6.3 x 50.8	4.750	28.50
1/4 x 2 1/2	6.3 x 63.5	6.100	36.60
1/4 x 3"	6.3 x 76.2	7.290	43.74
1/4 x 3 1/2"	6.3 x 88.9	8.630	51.78
1/4 x 4"	6.3 x 101.6	9.820	58.92
5/16 x 2"	7.9 x 50.8	5.840	35.04
5/16 x 2 1/2"	7.9 x 63.5	7.440	44.64
5/16 x 3"	7.9 x 76.2	9.080	54.48
5/16 x 4"	7.9 x 101.6	12.200	73.20
3/8 x 2"	9.5 x 50.8	6.990	41.94
3/8 x 2 1/2	9.5 x 63.5	8.790	52.74
3/8 x 3"	9.5 x 76.2	10.720	64.32
3/8 x 4"	9.5 x 101.6	14.600	87.60
3/8 x 6"	9.5 x 152.4	22.170	133.02
1/2" x 3"	12.7 x 76.2	13.990	83.94
1/2" x 4"	12.7 x 101.6	19.000	114.00
1/2" x 6"	12.7 x 152.4	29.170	175.02
5/8 x 6"	15.9 x 152.4	36.010	216.06
3/4 x 6"	19.1 x 152.4	42.710	256.26

Angulos Desiguales

Medida		Peso	
Pulgadas	Milímetros	Kg/m	Kg/6m
4 x 6	101.6 x 152.4		
3/8	9.5	18.300	109.80
1/2	12.7	24.110	144.66
5/8	15.9	29.760	178.56
3/4	19.1	35.120	211.00

Cuadrados de Fierro y Caramelo



Medida		Peso	
Pulgadas	Milímetros	Kg/m	Kg/6m
3/8	9.5	0.712	4.27
1/2	12.7	1.266	7.60
5/8	15.9	1.978	11.87
3/4	19.1	2.849	17.09
1	25.4	5.065	30.39
1 1/4	31.7	7.913	47.48
1 1/2	38.1	11.395	68.37
2	50.8	20.258	121.55
2 1/2	63.5	31.653	189.92

Zeta

1/8 x 5/8 x 1	3.2 x 25.4	1.210	7.26
---------------	------------	-------	------

Te

1/8 x 3/4	3.2 x 19.1	0.910	5.46
1/8 x 1	3.2 x 25.4	1.320	7.92

Soleras de Fierro



Perfiles Viaducto Tlalpan

Medida		Pesos	
Pulgadas	Milímetros	Kg/m	Kg/6m
1/8 x 1/2	3.2 x 12.7	0.317	1.90
1/8 x 5/8	3.2 x 15.9	0.396	2.38
1/8 x 3/4	3.2 x 19.1	0.474	2.84
1/8 x 1"	3.2 x 25.4	0.633	3.80
1/8 x 1 1/4	3.2 x 31.7	0.791	4.75
1/8 x 1 1/2	3.2 x 38.1	0.950	5.70
1/8 x 2"	3.2 x 50.8	1.266	7.60
1/8 x 2 1/2	3.2 x 63.5	1.600	9.6
1/8 x 3"	3.2 x 76.2	1.900	11.40
3/16 x 1/2	4.8 x 12.7	0.474	2.84
3/16 x 5/8	4.8 x 15.9	0.593	3.56
3/16 x 3/4	4.8 x 19.1	0.712	4.27
3/16 x 1"	4.8 x 25.4	0.950	5.70
3/16 x 1 1/4	4.8 x 31.7	1.187	7.00
3/16 x 1 1/2	4.8 x 38.1	1.424	8.54
3/16 x 2"	4.8 x 50.8	1.899	11.39
3/16 x 2 1/2	4.8 x 63.5	2.374	14.24
3/16 x 3"	4.8 x 76.2	2.849	17.09
1/4 x 1/2	6.3 x 12.7	0.633	3.80
1/4 x 5/8	6.3 x 15.9	0.633	4.75
1/4 x 3/4	6.3 x 19.1	0.791	5.70
1/4 x 1"	6.3 x 25.4	0.950	7.60
1/4 x 1 1/4	6.3 x 31.7	1.266	9.50
1/4 x 1 1/2	6.3 x 38.1	1.583	11.39
1/4 x 2"	6.3 x 50.8	1.899	15.19
1/4 x 2 1/2	6.3 x 63.5	2.532	18.99
1/4 x 3"	6.3 x 76.2	3.165	22.79
1/4 x 4"	6.3 x 101.6	3.798	30.38
1/4 x 5"	6.3 x 127.0	4.748	37.98
1/4 x 6"	6.3 x 152.4	5.064	46.00
1/4 x 8"	6.3 x 203.2	6.330	61.00
5/16 x 1	7.9 x 25.4	7.596	9.50
5/16 x 1 1/4	7.9 x 31.7	10.128	11.87
5/16 x 1 1/2	7.9 x 38.1	1.583	14.24
5/16 x 2"	7.9 x 50.8	1.978	19.00
5/16 x 2 1/2	7.9 x 63.5	2.374	23.74
5/16 x 3"	7.9 x 76.2	3.165	28.49
5/16 x 4"	7.9 x 101.6	3.957	37.99
5/16 x 5"	7.9 x 127.0	4.748	47.48
5/16 x 6"	7.9 x 152.4	6.331	56.98
3/8 x 1"	7.9 x 19.1	1.899	17.09
3/8 x 1 1/4	7.9 x 25.4	2.374	22.79
3/8 x 1 1/2	7.9 x 31.7	2.849	28.49
3/8 x 2"	7.9 x 38.1	3.798	34.19
3/8 x 2 1/2	7.9 x 50.8	4.748	45.58
3/8 x 3"	7.9 x 63.5	5.698	56.98
3/8 x 4"	7.9 x 76.2	7.597	68.38
3/8 x 5"	7.9 x 101.6	9.496	92.00
3/8 x 6"	7.9 x 127.0	11.396	
3/8 x 8"	7.9 x 152.4	15.280	

Medida		Pesos	
Pulgadas	Milímetros	Kg/m	Kg/6m
1/2 x 1"	12.7 x 25.4	2.532	15.19
1/2 x 1 1/4	12.7 x 31.7	3.165	18.99
1/2 x 1 1/2	12.7 x 38.1	3.798	22.79
1/2 x 2"	12.7 x 50.8	5.064	30.38
1/2 x 2 1/2	12.7 x 63.5	6.331	37.99
1/2 x 3"	12.7 x 76.2	7.597	45.58
1/2 x 4"	12.7 x 101.6	10.129	60.77
1/2 x 5"	12.7 x 127.0	12.662	75.97
1/2 x 6"	12.7 x 152.4	15.194	91.16
1/2 x 8"	12.7 x 203.2	20.260	121.56
5/8 x 1	15.9 x 25.4	3.165	18.99
5/8 x 1 1/4	15.9 x 31.7	3.957	23.74
5/8 x 1 1/2	15.9 x 38.1	4.748	28.49
5/8 x 2"	15.9 x 50.8	6.331	37.99
5/8 x 2 1/2	15.9 x 63.5	7.913	47.48
5/8 x 3"	15.9 x 76.2	9.496	56.98
5/8 x 4"	15.9 x 101.6	12.661	75.97
5/8 x 5"	15.9 x 127.0	15.826	94.96
5/8 x 6"	15.9 x 152.4	18.992	113.95
3/4 x 1 1/2	19.1 x 38.1	5.698	34.19
3/4 x 2"	19.1 x 50.8	7.597	45.58
3/4 x 2 1/2	19.1 x 63.5	9.496	56.98
3/4 x 3"	19.1 x 76.2	11.395	68.37
3/4 x 4"	19.1 x 101.6	15.194	91.16
3/4 x 5"	19.1 x 127.0	18.992	113.95
3/4 x 6"	19.1 x 152.4	22.790	136.74
3/4 x 8"	19.1 x 203.2	30.388	182.33
1" x 2"	25.4 x 50.8	10.129	60.77
1" x 2 1/2	25.4 x 63.5	12.661	75.97
1" x 3"	25.4 x 76.2	15.194	91.16
1" x 4"	25.4 x 101.6	20.258	121.55
1" x 5"	25.4 x 127.0	25.322	151.93
1" x 6"	25.4 x 152.4	30.388	182.33
1" x 8"	25.4 x 203.2	40.516	243.10

Solera Pasamano

Kg. x mts.	Kg. x 6 mts.
1.900	11.40



Redondos de Fierro

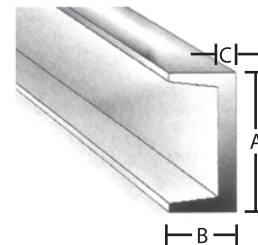


Medida		Pesos	
Pulgadas	Milímetros	Kg/m	Kg x 6/m
3/8	9.5	0.559	3.35
1/2	12.7	0.994	5.96
5/8	15.9	1.552	9.31
3/4	19.1	2.235	13.41
7/8	22.2	3.045	18.27
1	25.4	3.973	23.84
1 1/8	28.6	5.022	30.13
1 1/4	31.7	6.208	37.25
1 3/8	34.9	7.514	45.08
1 1/2	38.1	9.000	54.00
1 5/8	41.3	10.490	62.94
1 3/4	44.4	12.170	73.02
2	50.8	15.890	95.34
2 1/4	57.1	20.110	120.66
2 1/2	63.5	24.830	148.98
3	76.2	35.766	214.60

Semiflecha Redondo Pulido

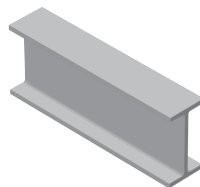
Diámetro General		Peso	
mm.	Pulg.	Kg./m	kg./pza.
12.7	1/2	0.994	5.960
11.1	7/16	0.770	4.600
9.5	3/8	0.599	3.590
7.9	5/16	0.388	2.330
6.3	1/4	0.249	1.490
4.7	3/16	0.146	0.880

Canal U CPS



La Canal "U" viene en tramos de 6.10 y 12.20 mts.

Viga IPS Tipo americano



PERALTE d		PESO	AREA	PESO Kg.
mm	pulg.	Kg/m	cm ²	6.10m.
76.2	3	8.48	10.52	51.73
101.6	4	11.72	14.26	71.50
127.0	5	15.08	18.52	92.00
152.4	6	18.60	23.29	113.46
203.2	8	27.38	34.39	167.02

PROPIEDADES DE CANAL "U"

PERALTE		PATIN		ALMA	PESO	
mm. (A)	Pulg. (A)	Ancho mm. (B)	Espesor mm. (B)		mm. (C)	Kg/m.
76.2	3	35.8	7	4	6.10	37.21
101.6	4	40.1	8	5	8.04	49.04
152.4	6	48.8	9	5	12.20	74.42
152.4	6	52.0	9	8	15.63	95.34
152.4	6	55.0	9	11	19.35	118.04
203.2	8	57.9	10	6	17.11	104.37
203.2	8	60.0	10	8	20.46	124.81
203.2	8	64.0	10	12	27.90	170.19
254.0	10	66.0	11	6	22.80	139.08
254.0	10	70.0	11	10	29.80	181.78
254.0	10	73.0	11	13	37.20	226.92
254.0	10	73.0	11	17	44.70	272.67
304.8	12	75.0	13	7	30.80	187.88
304.8	12	77.0	13	10	37.20	226.92
304.8	12	81.0	13	13	44.64	272.30

Av. Viaducto Tlalpan No. 425,
Col. San Lorenzo Huipulco,
Tlalpan, México, D.F., C.P. 14370
Tels. 5573-3026 / 5573-2917
5573-2979 / 5573 2879
5573-2993 / 1315 0095
5513-8569 / 5513-8574



www.viaductotalpan.com.mx